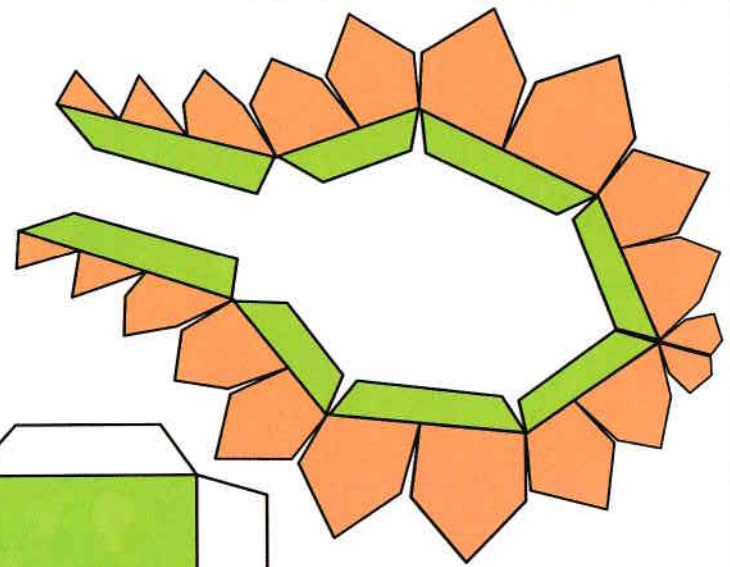
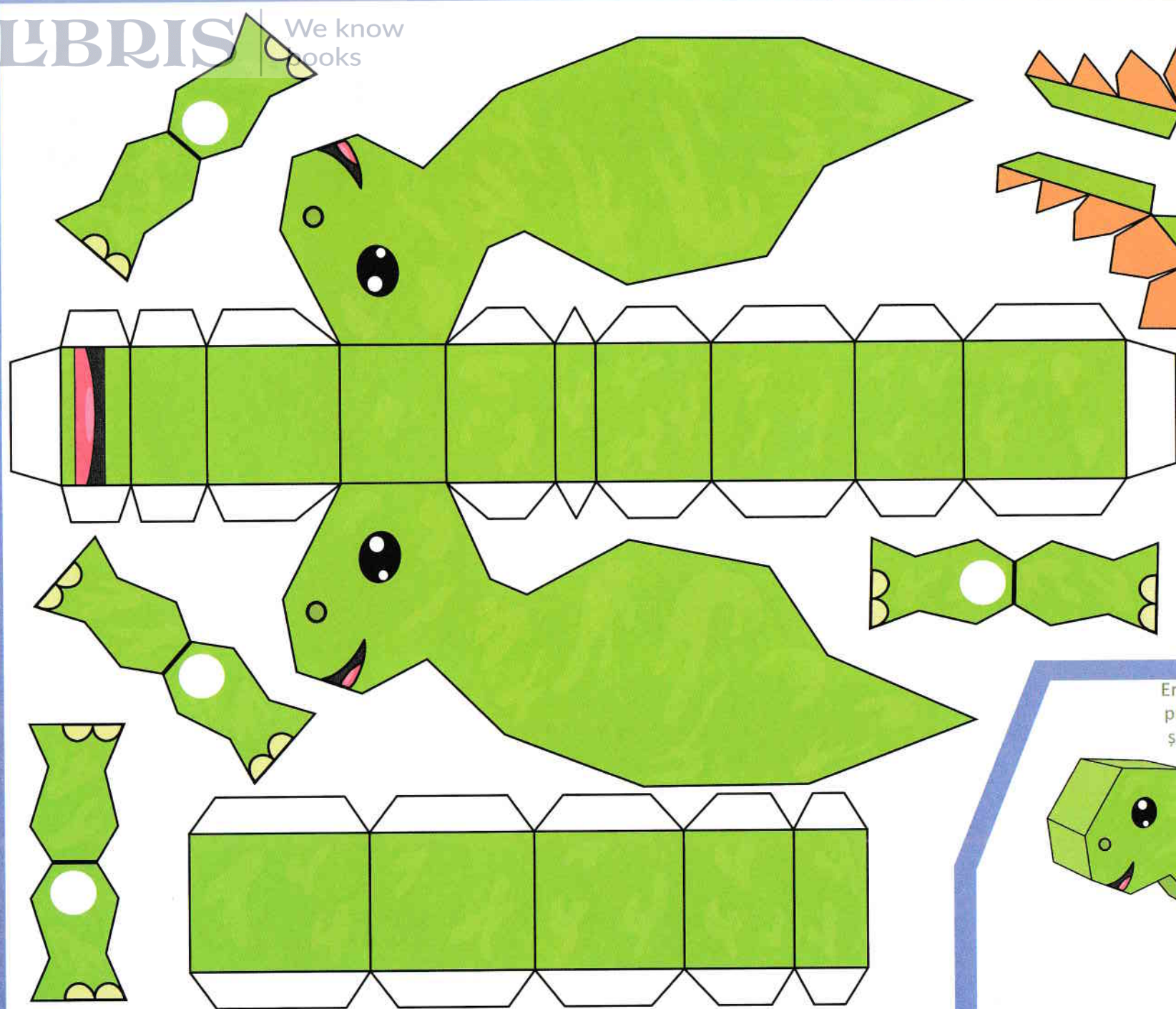


CONSTRUIM DINOZAUARI

Taie și lipește!

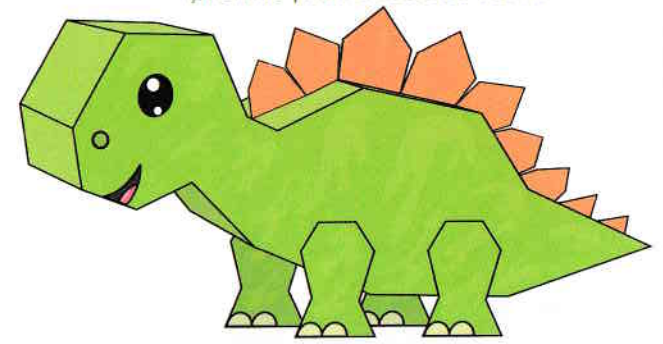


Această carte **ajută** la dezvoltarea
abilităților motorii fine prin joc!



Stegosaurus

Era ușor de recunoscut tocmai prin prezența pe partea dorsală a două șiruri de plăci osoase foarte mari.



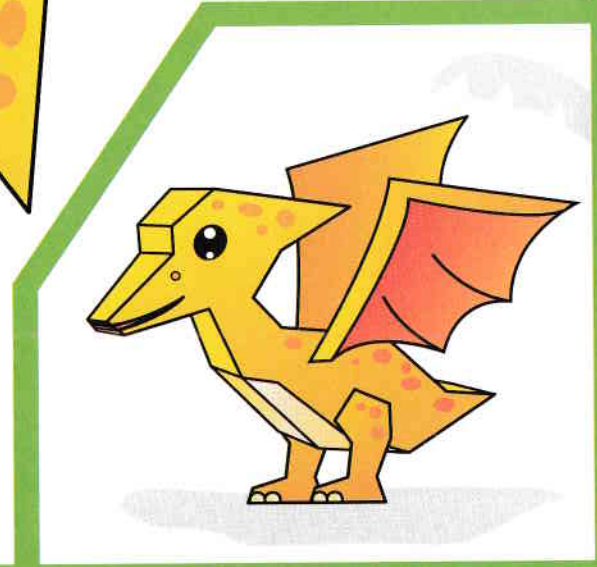
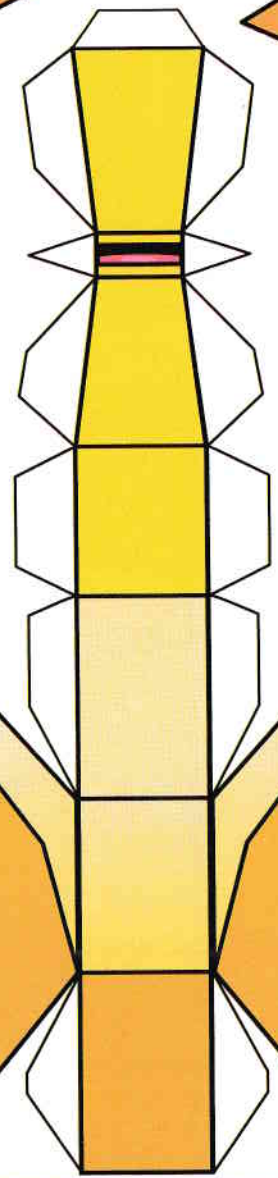
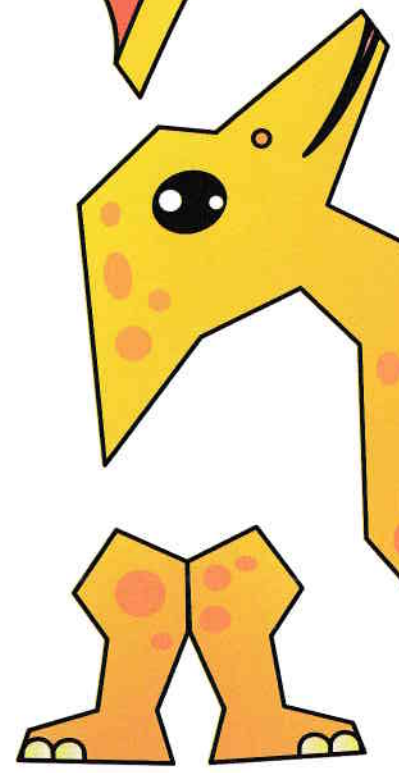
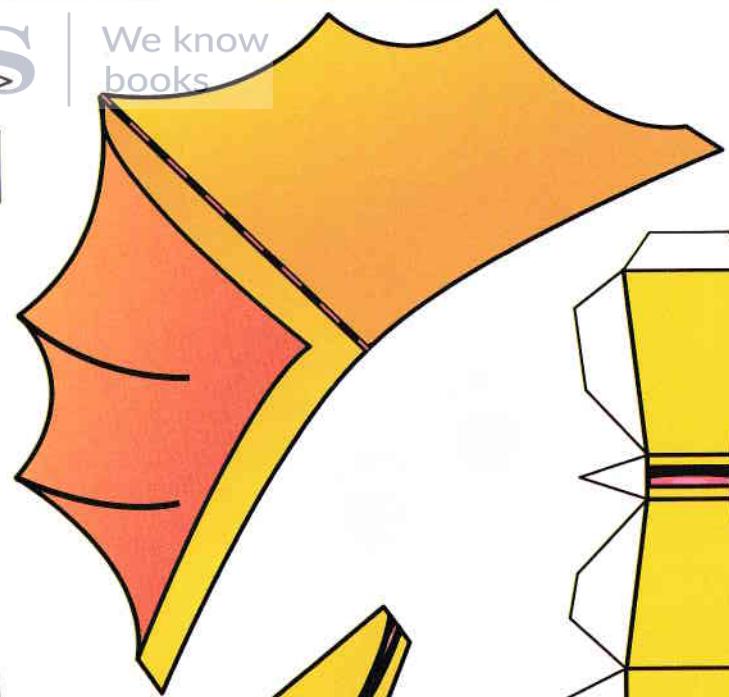
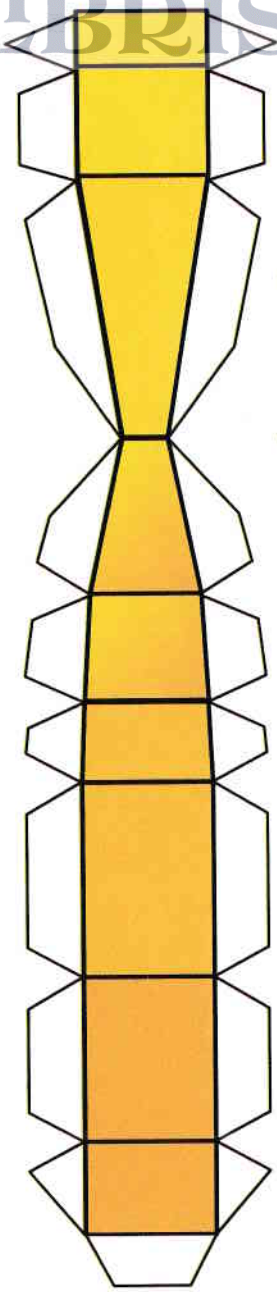


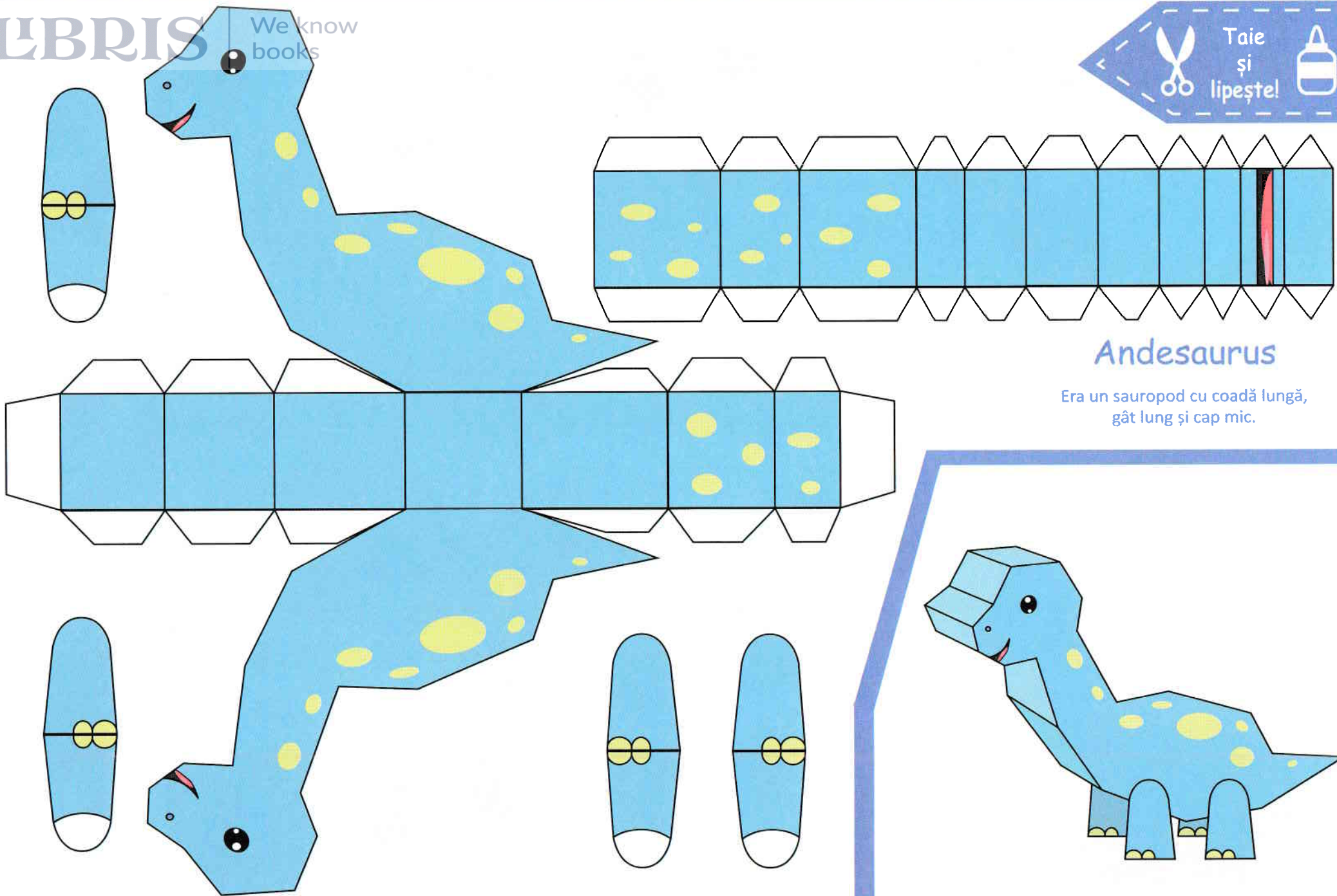
Taie și lipește!



Pteranodon

Nu era dinozaur, ci un pterozaur zburător.





Andesaurus

Era un sauropod cu coadă lungă,
gât lung și cap mic.

